

AZUL NOCHE

Technical Data Sheet



Quarry location: 40° 23' 28,78" N

5° 34' 35,94" W



Junciana- Ávila, Spain

WWW.GRUPIMAR.ES

INFO@GRUPIMAR.COM

GRUPIMAR[®]
MARCELINO GROUP

Petrographic denomination	Biotitic Porphyritic Granite	UNE - EN 12407
Apparent Density (Kg/m ³)	2750	UNE - EN 1936
Flexural Strength (MPa)	14,9	UNE - EN 12372
Water absorption (%)	0,2	UNE - EN 13755
Compressive strength (MPa)	141	UNE - EN 1926
Reduction in flexural strength after 48 cycles frost- thaw (%)	5,3	UNE - EN 12371
Breaking load at dowel holes (N)	-	UNE - EN 13364
Abrasion resistance (mm)	5,9	UNE - EN 14157
Resistance to ageing by thermal shock (%)	0,05	UNE - EN 14066
Reaction to fire	Class A1	Commission Decision 96/603/EC



WWW.GRUPIMAR.ES

INFO@GRUPIMAR.COM

GRUPIMAR[®]
MARCELINO GROUP

Azul Noche Flamed



Flamed (wet)



Flamed (dry)

WWW.GRUPIMAR.ES

INFO@GRUPIMAR.COM



Polished



Waterjet

WWW.GRUPIMAR.ES

INFO@GRUPIMAR.COM

GRUPIMAR[®]
MARCELINO GROUP



WaterJet

WWW.GRUPIMAR.ES

INFO@GRUPIMAR.COM

GRUPIMAR[®]
MARCELINO GROUP



Shot- Blasting

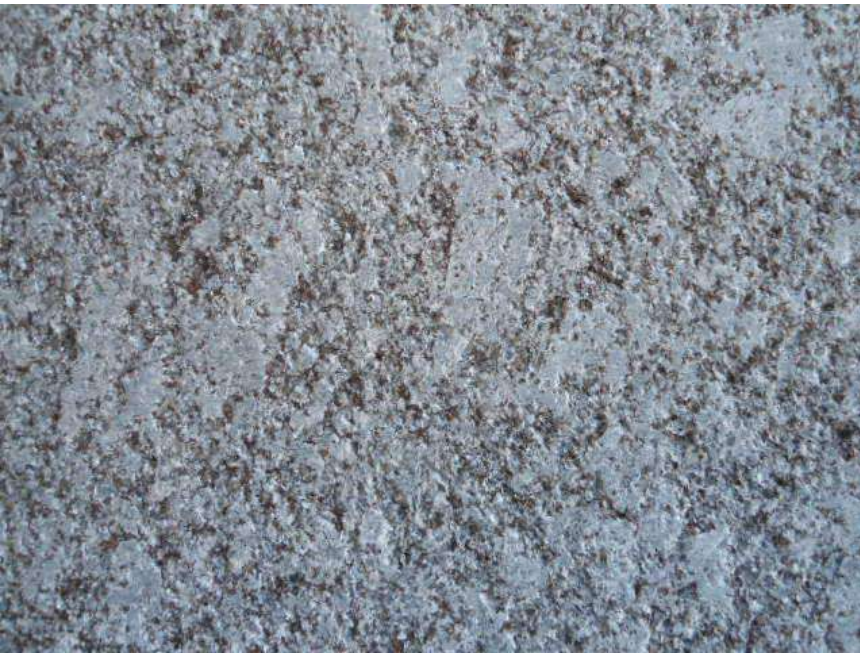


WWW.GRUPIMAR.ES

INFO@GRUPIMAR.COM

GRUPIMAR[®]
MARCELINO GROUP

Shot- Blasting Detail



WWW.GRUPIMAR.ES

INFO@GRUPIMAR.COM

GRUPIMAR[®]
MARCELINO GROUP



Honed



WWW.GRUPIMAR.ES

INFO@GRUPIMAR.COM

GRUPIMAR[®]
MARCELINO GROUP



WWW.GRUPIMAR.ES

INFO@GRUPIMAR.COM

GRUPIMAR[®]
MARCELINO GROUP



Cobblestones

WWW.GRUPIMAR.ES

INFO@GRUPIMAR.COM

GRUPIMAR[®]
MARCELINO GROUP

Corner Kerbs



Kerbs

WWW.GRUPIMAR.ES

INFO@GRUPIMAR.COM

GRUPIMAR[®]
MARCELINO GROUP

Special Pieces



WWW.GRUPIMAR.ES

INFO@GRUPIMAR.COM

GRUPIMAR[®]
MARCELINO GROUP

Special Pieces



WWW.GRUPIMAR.ES

INFO@GRUPIMAR.COM



GRUPIMAR[®]
MARCELINO GROUP



WWW.GRUPIMAR.ES

INFO@GRUPIMAR.COM



Special Pieces

GRUPIMAR[®]
MARCELINO GROUP



Special Pieces

WWW.GRUPIMAR.ES

INFO@GRUPIMAR.COM

GRUPIMAR[®]
MARCELINO GROUP



WWW.GRUPIMAR.ES

INFO@GRUPIMAR.COM

GRUPIMAR[®]
MARCELINO GROUP

Projects



Rode Loper - Amsterdam,
Nederlands



WWW.GRUPIMAR.ES

INFO@GRUPIMAR.COM

GRUPIMAR[®]
MARCELINO GROUP



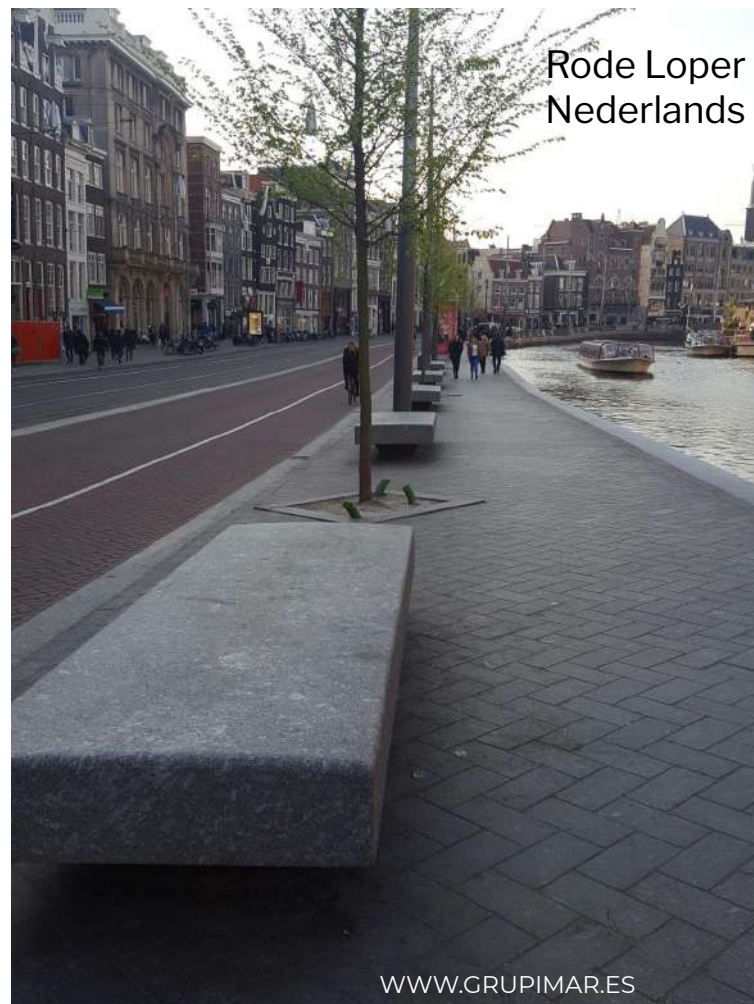
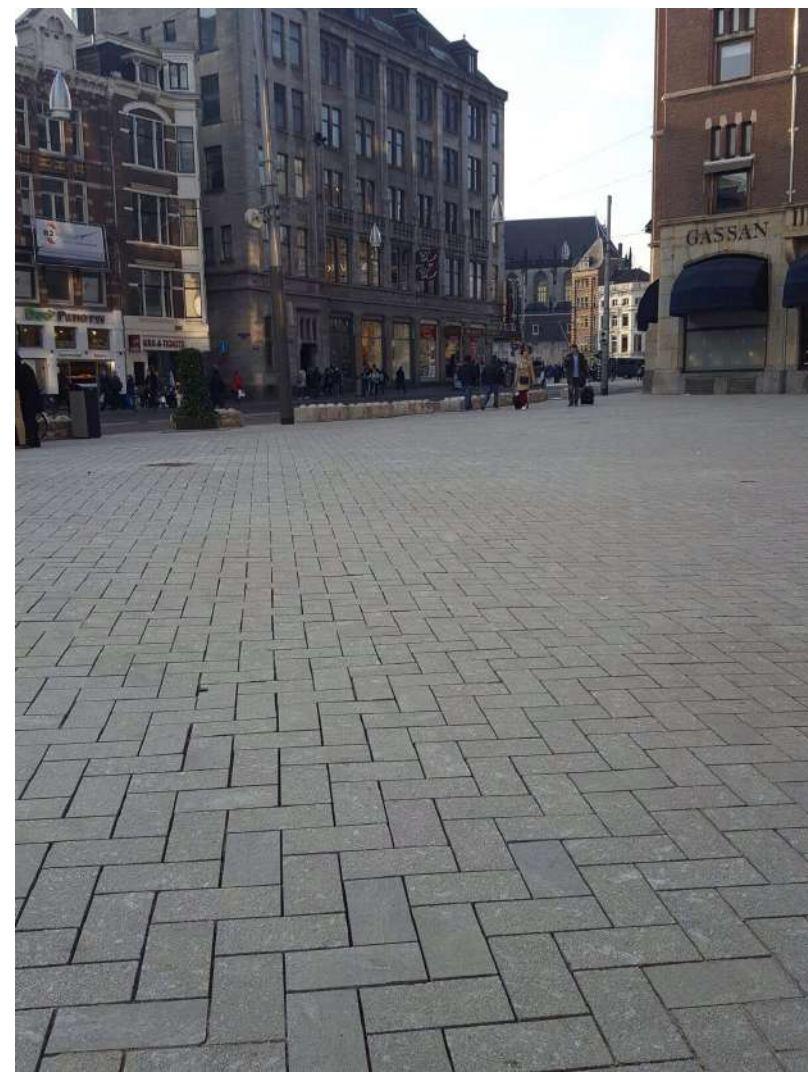
 Stone bench - Rode Loper
Amsterdam

WWW.GRUPIMAR.ES

INFO@GRUPIMAR.COM

GRUPIMAR[®]
MARCELINO GROUP

Rode Loper - Amsterdam,
Nederlands



WWW.GRUPIMAR.ES

INFO@GRUPIMAR.COM

GRUPIMAR
MARCELINO GROUP

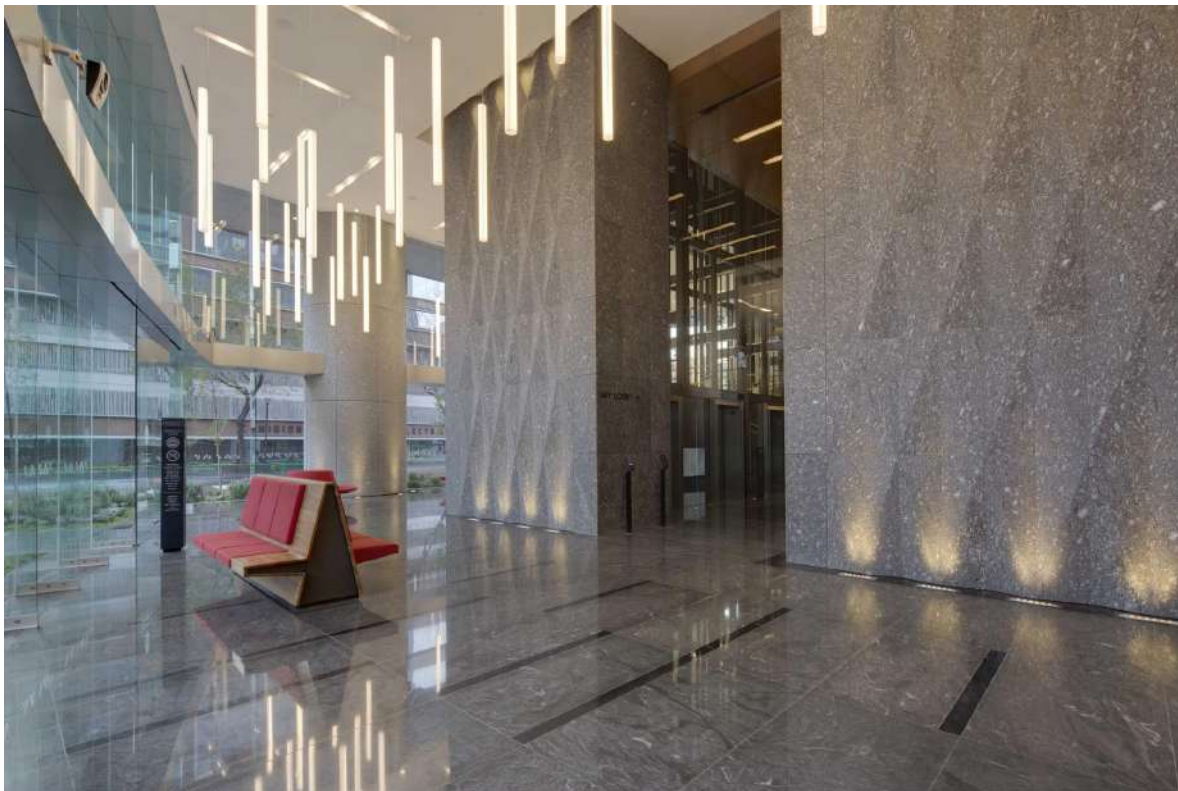


Rode Loper -
Amsterdam,
Nederlands

WWW.GRUPIMAR.ES

INFO@GRUPIMAR.COM

GRUPIMAR[®]
MARCELINO GROUP



Diana Tower - Ciudad de
México, México

WWW.GRUPIMAR.ES

INFO@GRUPIMAR.COM

GRUPIMAR[®]
MARCELINO GROUP



Diana Tower - Ciudad de México, México

WWW.GRUPIMAR.ES

INFO@GRUPIMAR.COM

GRUPIMAR
MARCELINO GROUP



Lealtad Street-
Santander, Spain



WWW.GRUPIMAR.ES

INFO@GRUPIMAR.COM

GRUPIMAR[®]
MARCELINO GROUP

Cork Airport - Cork, Ireland



96th Subway Station - New York, U.S.A.

WWW.GRUPIMAR.ES

INFO@GRUPIMAR.COM

GRUPIMAR[®]
MARCELINO GROUP

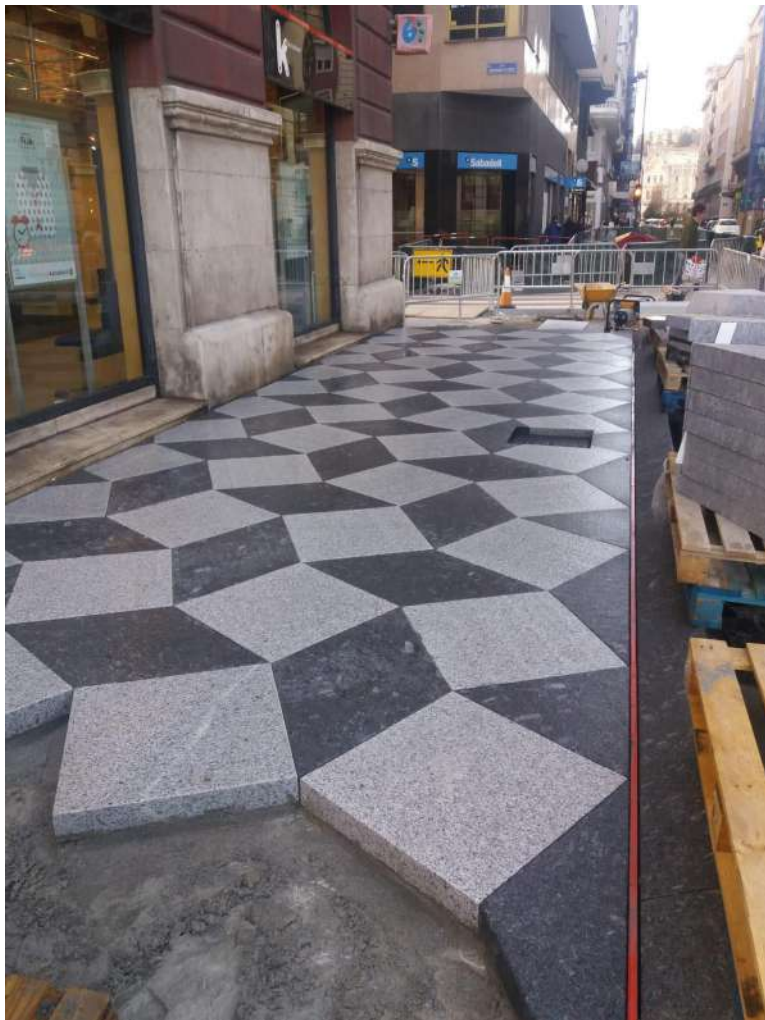


Acton
Gardens -
London, U.K.

WWW.GRUPIMAR.ES

INFO@GRUPIMAR.COM

GRUPIMAR[®]
MARCELINO GROUP



Street in Santander,
Spain

WWW.GRUPIMAR.ES

INFO@GRUPIMAR.COM

GRUPIMAR[®]
MARCELINO GROUP



Central Library Vigo
University - Vigo,
España

WWW.GRUPIMAR.ES

INFO@GRUPIMAR.COM

GRUPIMAR[®]
MARCELINO GROUP



One Beacon Building - Boston, U.S.A.



WWW.GRUPIMAR.ES

INFO@GRUPIMAR.COM

GRUPIMAR[®]
MARCELINO GROUP



WWW.GRUPIMAR.ES

INFO@GRUPIMAR.COM

GRUPIMAR[®]
MARCELINO GROUP



WWW.GRUPIMAR.ES

INFO@GRUPIMAR.COM

GRUPIMAR[®]
MARCELINO GROUP



WWW.GRUPIMAR.ES

INFO@GRUPIMAR.COM

GRUPIMAR[®]
MARCELINO GROUP